



Suite 615-800 West Pender Street  
Vancouver, B.C. V6C 2V6 Canada  
Tel: 604.682.0301 Fax: 604.682.0307  
email: info@amemining.com  
website: www.amemining.com  
Contact: Tim Mikula  
news release:07-16

TSX.V Symbol: AME

December 11, 2007

## NEWS RELEASE

---

### **Abacus Looks at DM Zone as a Complement to the Multi Pit Mining Plan**

**VANCOUVER, BC December 11, 2007 Abacus Mining & Exploration Corp. (TSX.V:AME)** (the "Company") is pleased to announce diamond drill results from the first 15 holes of a 32 hole, 29,875 foot (9,106 metre) program on its DM/Audra/Crescent ("DM") deposit, which lies 1.5 kilometres east of the old Afton mine and infrastructure. The focus of the drilling at the DM Zone is to upgrade and constrain the 43-101 compliant resource completed in 2005. Since the DM resource was calculated, the Company has completed an additional 51 drill holes totaling 53,359 feet (16,264 metres) on the deposit during 2006 and 2007. The Company plans to update the 43-101 compliant resource estimation on the DM zone by second quarter of 2008.

"The DM zone's resource is only 1.5 kilometres from the existing infrastructure and has a low strip ratio, which enables Abacus to look at the DM deposit as an important component of a potential multiple pit mining plan at Afton. This complements and adds to the proposed 2010 production from Ajax and elsewhere." said Doug Fulcher President and CEO. "Additionally Abacus continues to expand the resources at the Afton Ajax camp with the large multi pit scenario as the focus moving forward."

#### **DM Zone Highlights**

- Hole DA-07-069 intersects 33.43 metres grading 0.56% copper and 0.33 g/t gold
- Hole DA-07-056 intersects 24 metres grading 0.42% copper and 0.23 g/t gold within a wider interval grading 0.29% copper and 0.18 g/t gold over 108 metres.
- Hole DA-07-068 intersects 33 metres of 0.38% copper and 0.34 g/t gold.

The following tables list the most recent drill results from the DM zone. Intercept lengths are core lengths, which do not necessarily reflect true width. Section spacing is 30 metres. A drill hole plan map is available at [www.amemining.com](http://www.amemining.com).

DM-AUDRA-CRESCENT DRILL RESULTS BY SECTION

Section	Hole No.	Dip Deg	Az. Deg	Hole Length (m)	From (m)	To (m)	Length (m)	Copper %	Gold g/t
19N	DA-07-072	-45	312	199.64	NSV				
22N	DA-07-069	-45	312	160.63	29.57	63	33.43	0.56	0.33
23N	DA-07-068	-44.9	308.8	173.43	39	72	33	0.38	0.34
24N	DA-07-067	-45	312	189.59	38.71	84	45.29	0.16	0.14
25N	DA-07-066	-44	310.8	175.87	39	84	45	0.18	0.08
26N	DA-07-065	-45	312	157.58	65	89	24	0.23	0.09
27N	DA-07-064	-44.5	312.3	172.82	15	39	24	0.19	0.05
29N	DA-07-063	-45	312	164.59	60	90	30	0.33	0.05
31N	DA-07-061	-44.8	315.3	63.09	9.14	24	14.86	0.16	0.24
31N	DA-0-062	-44.5	312	199.03	78	105	27	0.18	0.02
	(redrill of 061)			Incl	96	105	9	0.23	0.01
33N	DA-07-060	-44.5	313.5	221.59	74	80	6	0.31	0.05
36N	DA07-059	-45	222	175.87	48	63	15	0.36	0.20
36N	DA-07-058	-75.1	306.5	306.93	153	159	6	0.26	0.11
36N	DA-07-057	-46	310	379.48	NSV				
36N	DA-07-056	-44.2	131.5	306.32	36	72	36	0.23	0.05
	And				108	216	108	0.29	0.18
	Incl				108	177	69	0.33	0.22
	Incl				132	156	24	0.42	0.23

## **About the Afton Property**

The Afton properties belonging to the Company lie within a mining camp hosting a number of mined and un-mined alkalic copper-gold, porphyry style deposits. Since 2002, Abacus has redefined several known deposits through expansion of down-dip and strike extensions. In doing so, the Company has completed 399,000 feet (121,618 metres) of drilling. To date, the Company has developed NI 43-101 compliant indicated resources on the DM and Rainbow deposits, totaling 60.1 million tonnes and an inferred resource at the Ajax West deposit totaling 147,000,000 tonnes (all resources calculated at 0.20% copper cutoff).

During this time frame, the existing DM/Audra/Crescent compliant resource, completed in 2005, will also be recalculated, incorporating the recent 2006 and 2007 drilling.

Upon completion of all resource estimates, Abacus intends to progress their Afton project through preliminary economic studies and into feasibility during the second half of 2008.

Eco Tech Laboratory Ltd. of Kamloops, B.C., has completed all of Abacus's analytical work on the project. A quality-control program, using specific standards and blank samples is in place. Robert G. Friesen, P.Geo. is the qualified person responsible for the design and conduct of the work performed.

On Behalf of the Board,

ABACUS MINING AND EXPLORATION CORPORATION

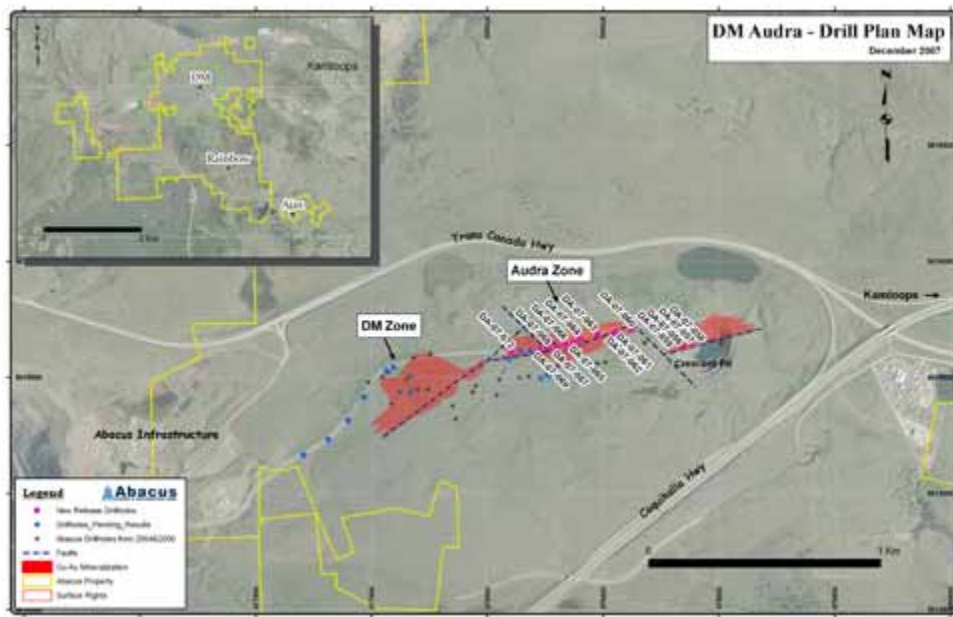
**Doug Fulcher,**

President and Chief Executive Officer

---

### **Forward-Looking Information**

This release includes certain statements that may be deemed "forward-looking statements". All statements in this release, other than statements of historical facts, that address events or developments that Abacus Mining and Exploration Corp. (the "Company") expects to occur, are forward-looking statements. Forward-looking statements are statements that are not historical facts and are generally, but not always, identified by the words "expects", "plans", "anticipates", "believes", "intends", "estimates", "projects", "potential" and similar expressions, or that events or conditions "will", "would", "may", "could" or "should" occur. Forward-looking statements in this release include statements regarding the Company's rights and benefits under the letters of intent with New Gold and Teck Cominco; the Company's future exploration and development plans; and the timing and nature of any future resource estimates, economic analyses or feasibility studies. Although the Company believes the expectations expressed in such forward-looking statements are based on reasonable assumptions, such statements are not guarantees of future performance and actual results may differ materially from those in the forward-looking statements. Factors that could cause the actual results to differ materially from those in forward-looking statements include market prices, exploitation and exploration successes, continued availability of capital and financing, and general economic, market or business conditions. Investors are cautioned that any such statements are not guarantees of future performance and actual results or developments may differ materially from those projected in the forward-looking statements. Forward-looking statements are based on the beliefs, estimates and opinions of the Company's management on the date the statements are made. The Company undertakes no obligation to update these forward-looking statements in the event that management's beliefs, estimates or opinions, or other factors, should change. These statements are based on a number of assumptions, including, among others, assumptions regarding general business and economic conditions, the ability of the Company and other relevant parties to satisfy stock exchange and other regulatory requirements in timely manner, the availability of financing for the Company's proposed transactions and exploration and development programs on reasonable terms and the ability of third-party service providers to deliver services in a timely manner.



[Click here to view full size map](#)